

## Service summary

Signify *Passcode OnDemand* is a fully managed security service which delivers simple and cost effective two-factor strong authentication which is quick to deploy and does not require the user to carry a new device.



## The need for strong authentication

As organisations open up their networks to allow a wider range of staff, customers and business partners to access their critical business applications, it is accepted that standard, static passwords cannot provide the security and user accountability required to combat the growing threat of Identity Theft and comply with increasingly stringent industry regulations.

### *Something you know plus something you have*

Stronger forms of authentication require that a user presents two different forms of credential to verify their identity; typically a secret password or PIN *plus* proof of ownership of a unique uncloneable device.

This combination of *something you know* with *something you have* is known as 'two-factor' authentication and traditionally has required the user to carry a special token or smartcard device.



*The Secure Authentication Service*



## Strong authentication without a special device

Signify *Passcode OnDemand* eliminates the cost and complexity of issuing new devices to users as it turns their personal mobile phone, PDA or other wireless device into their physical authentication credential. The service is ideal for anyone who needs secure access to your network or web portal.

During the login process the user clicks a hyperlink to request a secure one-time passcode (OTP). Signify validates the user's PIN, generates a unique OTP and sends it to their registered mobile phone, PDA or email box by SMS or email. The user logs in with this OTP, proving they both know their PIN and have access to their registered device.

With the '*PreSend*' feature enabled, as soon as an OTP is used, Signify automatically sends a new one to the user, so there is always an OTP ready to be used. No waiting, no fuss.

## How it works

### Using 'PreSend' mode

'PreSend' makes your mobile phone or PDA work just like a token: there is always an OTP to use when you need one. It is the ideal mode for: more regular users, those who don't want to wait for each OTP message to arrive, or users who are often out of service coverage. It is also best for users who need to log into non-web based Authentication Nodes such as IPSEC VPN's, Wireless Access Points and RAS Servers.

PreSend mode is easy to use. You request your first OTP message from the Signify Web Portal (as described in OnDemand mode below). Then you simply:

- Connect to the VPN, web server or other Signify-protected service and are prompted to log-in.
- In the passcode field you enter your secret PIN followed by the OTP showing on your phone or PDA.
- Your passcode is sent by the server to Signify for validation. If the passcode is verified as being correct and valid, then Signify returns an 'Authentication Success' notification to the server which completes the login process and allows you to access to the resources that you are authorised to see, otherwise access is rejected.
- Signify's systems recognise that the OTP has been used, and will send you a fresh OTP, ready for your next log-in.

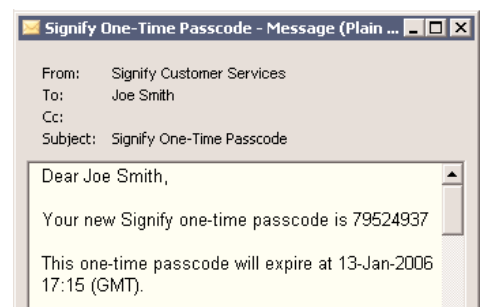
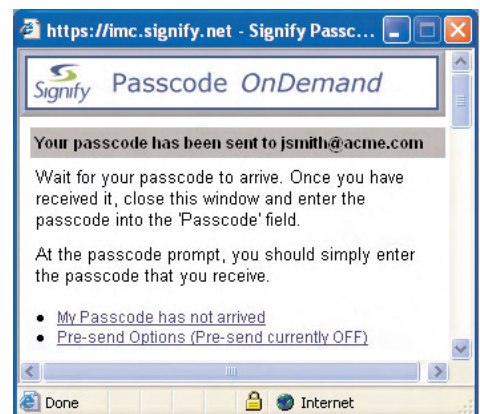
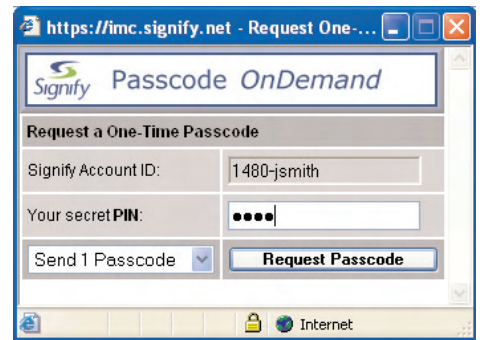
### Using 'OnDemand' mode

'OnDemand' service mode is ideal for those users who only need to log in occasionally to a Web Portal or SSL VPN system. The steps are as follows:

- You connect to the Signify-protected website or SSL VPN portal page and enter your e-mail address or account ID.
- On clicking a button, a pop-up window appears which prompts you to enter your secret PIN.
- The PIN is verified by Signify, and if correct, the OTP message is sent to your specified device.
- When the message arrives a few seconds later, you simply type the OTP into the passcode field on the web page
- This OTP is sent by the web server to Signify for validation.
- If the passcode is verified as being correct and valid, then Signify returns an 'Authentication Success' notification to the web server which completes the login process and allows you to access to the pages that you are authorised to see, otherwise your access request is rejected.

Users can switch between 'PreSend' and 'OnDemand' mode at any time to suit their ever-changing working patterns.

[info@signify.net](mailto:info@signify.net) [www.signify.net](http://www.signify.net) +44 (0)1223 472572



## A perfect solution

*Passcode OnDemand* is perfect for rigorously authenticating remote user access to sensitive systems such as:

- Members of staff accessing the company Intranet from a home PC
- Travelling staff checking web email from an airport lounge or hotel lobby
- Clients and business partners accessing an Extranet
- Web-based application and services delivered by ASPs eg: *Salesforce.com*
- Contractors and part-time staff accessing corporate networks
- On-line banking, betting and retailing
- Any application or service where users need to be granted temporary or emergency access



*Passcode onDemand*

### Key Benefits

- *Low cost, two-factor strong authentication*
- *No new device for user to carry*
- *Simple and intuitive to use*
- *Nothing to install or support on user's phone or PDA*
- *Instant deployment to remote user base*
- *Scales from a handful of users to thousands*
- *No new systems to install or manage*
- *Mix & match with **RSA SecurID** from Signify token service*

Free evaluation –  
try before you buy

[www.signify.net](http://www.signify.net)



Signify and the Signify logo are registered trademarks of Signify Solutions Limited. RSA SecurID and the RSA logo are registered trademarks of RSA Security Inc. Microsoft and Windows are registered trademarks of Microsoft Corporation. The Blackberry brand and image are the exclusive properties and trademarks or registered trademarks of Research In Motion Limited. All other logos and trademarks are properties of their respective owners.